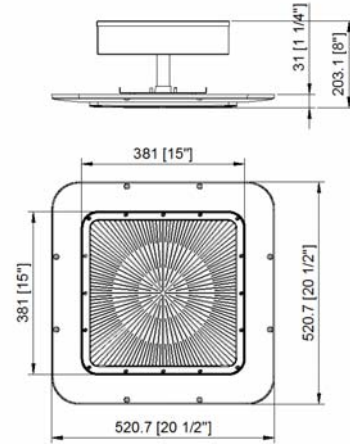




Recessed Gas Station Canopy Series 150 Watts



Features:

Directed Optics - Wide Angle

Thin Appearance

Good Heat Dissipation

Perfect for Replacement of Traditional Canopies

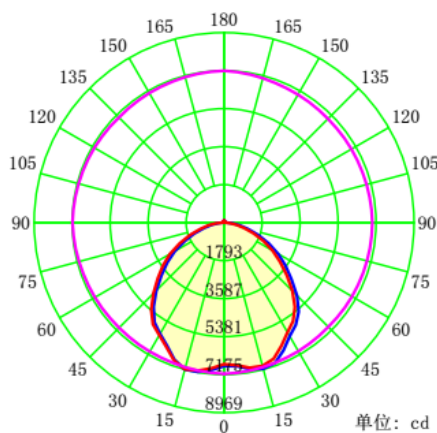
Recessed Mount

0-10V/PMW Dimming

Long Life high Efficiency LEDs

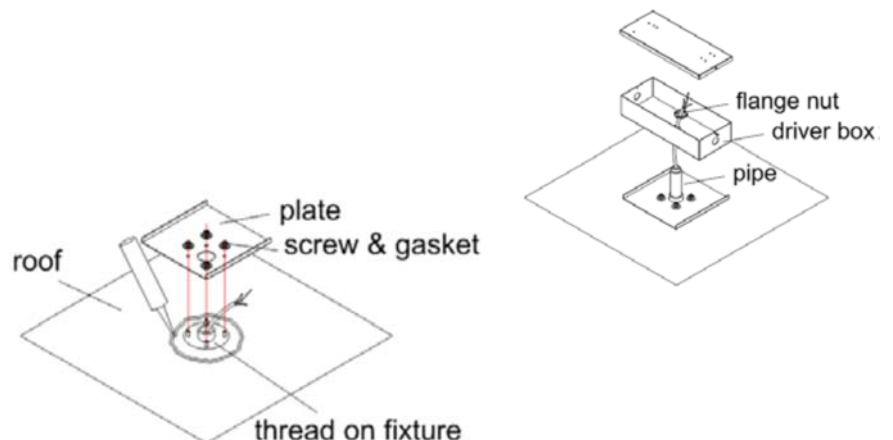
Part#	Housing Color	Wattage	Lumens	CCT	Voltage	Dimming	Light Pattern	Lumens/Watt	DLC #
71413	White	150	20,483	5000	120-277	1-10V/PWM/VR	110° x 110°	139	PLEEX9A6O3TE

PHOTOMETRY



— C0-C180 — C90-C270 — G15

Mounting Options





Recessed Gas Station Canopy Series

Technical Specifications:

Electrical:

Input Voltage: 120 thru 277

Current: 1.23A @ 120V; .56A @ 277V

Frequency: 60Hz

Power Factor: $\geq .91$

THD: 5.13@ 120V; 6.98 @ 277V

Product Parameters:

150 Watt s

Lumens: 20,483

Efficacy: 139 lumens per watt

50,000+ LED Life Span

CCT: 5000k (Cool White)

Chromacity Measurements:

Beam Angle: 110°

BUG Rating: B4-U2-G2

CRI: >74

R9: 0

DUV: .0018

Chromaticity (x,y): x=.3276; y= .3333

Chromaticity (u,v): x=.2066; y= .4728

Component Specifications:

LED: Philips LumiLED 3030

Driver: 100-277V 50-60HZ

Driver Output Volts:

Driver Output Amps:

10KV Surge Protection

Dimming:

0-10V/PWM

Operating Temperature: - 40°F - +131°F

Construction:

Housing: ADC12 Aluminum Alloy

Powder Coated

IP Rating: IP65 suitable for wet locations

Lens Material: High Light Transmittance Polycarbonate

UV Resistant

Fire Resistant

Mounting: Recessed via Pendant Mount

Listings: UL Listed: E474299

DLC#: PLEEX9A6O3TE

Carton Qty: 1

Weight:: 16lb

Warranty:

Morris Products carries a 5 year warranty from date of purchase against defects in materials and workmanship (assuming normal and proper usage).